

PMC-GAS- PRODUCTS TRAINING 2024

Houston



Honeywell



TABLE OF CONTENT

Introduction	3
USM 1 (QSonic Plus/Max)	4
USM 2 (Advanced Level)	5
Measurement-IQ for Gas	6
Industrial Gas Flow Computer enCore FC1	7
Gas Quality Analyzer EnCal 3000	8
Gas Quality Analyzer EnCal proChain	9
Gas-Lab Q2	10
How to Find Us	11
Registration & Organization	12



INTRODUCTION

Honeywell Academy and our exceptional faculty and staff wish to extend you a warm welcome. Whether you are a returning student, just beginning your training plan, Honeywell Academy offers you a quality learning experience designed to empower you to advance your education, career opportunities and performance goals.

Our new training brochure for 2024 contains all our specialist courses to keep your personnel who use our Honeywell Elster products every day up to date with all the latest developments. Whether they attend the training at Houston City or at your premises, we will definitely be able to find the perfect solution for your training requirements.



Ultrasonic flow metering

USM 1 (QSonc PLUS/MAX)

AIM

In this 2-days training, participants get to know the functions and possible applications of Q.Sonic Gas Flowmeters and learn how to perform commissioning, function checks, maintenance, and troubleshooting of series 6 Q.Sonic flow meter.

CONTENTS

- Fundamental and principal of an ultrasonic metering
- Design and Structure of NGQ & Legacy ultrasonic flow meter
- Ultrasonic configuration software
- Commissioning & best practices
- Data analysis
- Troubleshooting and fault analysis
- Optimization of USM setting and tolls to use
- Firmware and hardware upgrade
- Series 6 electronic retrofit kit upgrade on legacy meter
- Configuration of an old meter

NOTES

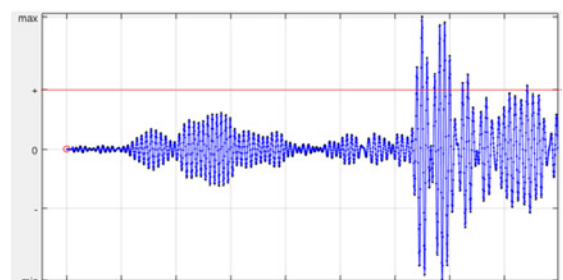
- Safety footwear is required
- A laptop with administrations rights is required (installation of the current Sonic explorer & enSuite softwares)

TARGET GROUP

- Service technicians
- Measurement engineer
- Technical specialist

TRAINING 2024

- 26 February -1 March
- 6-8 May
- 12 – 16 August
- 11-13 November





Ultrasonic flow metering

USM 2 (ADVANCED LEVEL)

AIM

This 3-days training is intended for experience service technicians and auditors who carry out or assist tests, function checks, perform maintenance, hardware and firmware upgrade and troubleshoot of the ultrasonic flow meter.

Enable experience field personnel to perform service electronic Series VI retrofit upgrade kit, be able to analyze data and troubleshoot fault analysis on the device during commissioning.

CONTENT

- Fundamental and principal of an ultrasonic metering
- Design and Structure of & Legacy ultrasonic flow meter
- Series –VI Configuration (Uniform data conversion Sonic Explorer or enSuite)
- Electronic hardware upgrade from Series-III or IV to Series-VI
- Commissioning & best practices
- Data analysis, Optimization of USM setting and tools to be used
- Troubleshooting and fault analysis
- Firmware and hardware upgrade
- Transducer Retractable Procedure (Online / Pressurized and Depressurized)

NOTES

- Safety footwear is required
- A laptop with administrations rights is required (installation of the current Sonic explorer & enSuite softwares)

TARGET GROUP

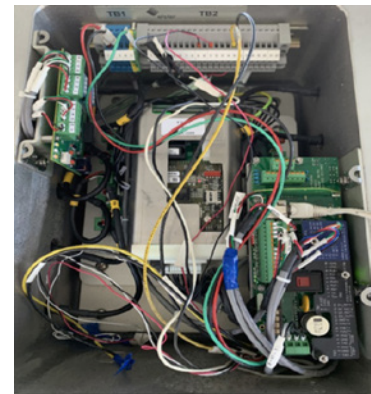
- Metering Maintenance Team
- Service technicians
- Measurement engineer
- Technical specialist

PREFERENCE

Knowledge on operation and functional knowledge on USM

TRAINING 2024

- 26 February -1 March
- 12 – 16 August





Condition Based Monitoring (CBM)

MEASUREMENT-IQ FOR GAS

ON-DEMAND

AIM

In this 1-day training, participants get to know the functions and applications of MIQ and learn how to configure and perform data evaluation. You will be able to leverage the Power of Connected, to use MIQ's real-time, round-the-clock CBM to cut the costs of lost and unaccounted for gas, anticipate problems before they occur while keeping the measurement uncertainty to a minimum.

CONTENTS

- Introduction: Architecture and functions
- Design and interface of MIQ
- Setting of parameters
- Communication setup
- Reference setup
- Maintenance and Diagnostic

NOTES

- Luptatum es vellacea dolesto modit, simus, id quidus distis iur am voluptation porum dolorestem vention explaborum, volore re cupta si cuscient, alis estia

TARGET GROUP

- Service technicians
- Metering engineers





Industrial Gas Stations

INDUSTRIAL GAS FLOW COMPUTER ENCORE FC1

ON-DEMAND

AIM

In this 2-days training, participants learn the application and configuration options of enCore FC1 Flowcomputers with integrated registration.

Parameterizations are carried out using the enSuite software in the so-called "normal mode".

Comprehensive practical exercises are intended to facilitate use of the encore FC1 with different I/O process connections and various components and simulations.

New developments and regulations are currently being communicated.

CONTENTS

- Introduction, overview and features of network connection
- Operation and function
- Online/Offline parameterization
- Application and parameterization of encore FC1
- Installation and use of the enSuite software
- Parameterization Backup and Restore
- Procedure to upgrade from FC2000 to enCore FC1

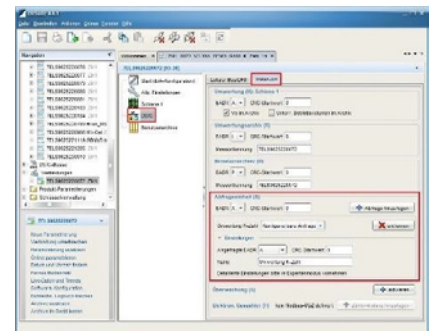
NOTES

It is a good idea to bring a notebook laptop with administrator rights to install the most recent parameterization software (enSuite)

On request, we can cover the applications in „expert mode“ in specially designed trainings.

TARGET GROUP

Users who are already familiar with volume conversion devices and who wish to use the enCore FC1 in the future.





Natural Gas, What is the composition and calorific value?

GAS QUALITY ANALYZER ENCAL 3000

AIM

In this 2-day training, participants get to know the functions and possible applications of EnCal3000 Gas Analyzers and learn how to independently evaluate chromatograms and how to perform a basic calibration and an error analysis. So you are prepared to support official calibration measures and to independently optimize your processes and analyze errors.

CONTENTS

- Design and type of action of PGC EnCal 3000 natural gas and biogas
- Design and structure of the RGC3000 application software
- Operating the gas-net EnCal 3000 evaluation unit
- Setting of parameters
- Carrying out a calibration
- Connecting and measuring test gases
- Connecting the evaluation unit
- Questions and ideas

NOTES

Safety footwear and a laptop with administrator rights are required (installation of the parameterization software).

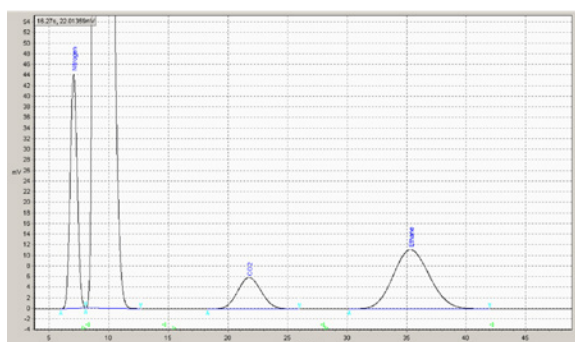
We have option to do it in German - Mainz / Dortmund

TARGET GROUP

Users, service technicians and auditors who carry out tests and function checks of the EnCal 3000.

TRAINING 2024

- 19-23 February
- 20-24 May
- 19-23 August
- 4-8 November





Natural Gas, What is the composition and calorific value?

GAS QUALITY ANALYZER ENCAL PROCHAIN

AIM

In this 2-day training, participants get to know the functions and possible applications of EnCal3000 prochain Gas Analyzers and learn how to evaluate chromatograms and a how to perform a basic calibration and an error analysis. So you are prepared to support official calibration measures and to independently optimize your processes and analyze errors.

CONTENTS

- Design and type of action of PGC EnCal proChain for natural gas C6
- Design and structure of the enSuite parameterization software
- Setting of parameters
- Carrying out a calibration
- Connecting and measuring test gases
- Connecting the evaluation unit
- Questions and ideas

NOTES

Safety footwear and a laptop with administrator rights are required (installation of the enSuite software).

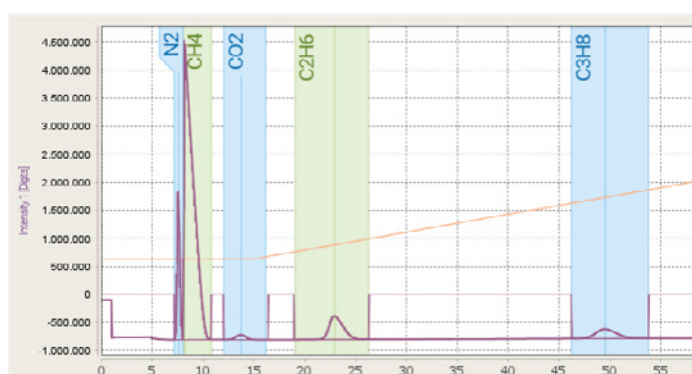
We have option to do it in German - Mainz / Dortmund

TARGET GROUP

User, service technicians and auditors who carry out tests and function checks of the EnCal 3000 proChain.

TRAINING 2024

- 19-23 February
- 20-24 May
- 19-23 August
- 4-8 November





Natural Gas, What is the calorific value? Fast Analysis

GAS-LAB Q2

This one-day training is intended for service technicians and auditors who carry out or assist tests and function checks of the Gas-Lab Q2.

AIM

Evaluation of process values, carrying out service calibration, test gas analyses runs, fault analysis on the device.

CONTENTS

- Design and type of action of Gas-Lab Q2
- Design and structure of the Q2 application software enSuite
- Evaluation of source values
- Operating the Q2 display unit
- Setting of parameters
- Carrying out a calibration
- Connecting and measuring test gases
- Connecting the evaluation unit
- Troubleshooting

NOTES

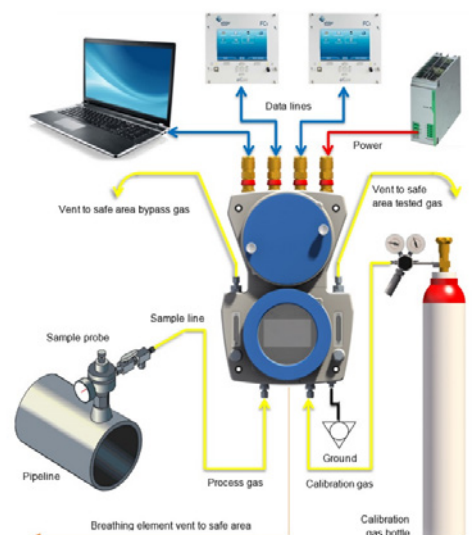
Safety footwear is required

A laptop with administrations rights is required (installation of the current enSuite software)

TARGET GROUP

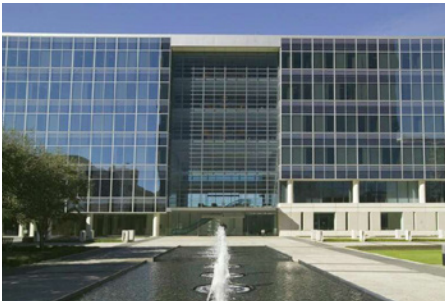
Service technician.

ON-DEMAND





HOW TO FIND US



HOUSTON

Honeywell International Inc

11201 Greens Crossing Blvd
Houston TX 77067



REGISTRATION & ORGANIZATION

REGISTRATION

You can register by contacting your local representative or send an e-mail to Monei.EssoueniAkeni@Honeywell.com

After aligning the details, you will receive a training agenda and all the information you need to book the training.

After booking we finally confirm the schedule and the order.

OUR SERVICES

- Experienced trainers
- Training material
- Lunch on all training days
- Refreshments during the training

YOUR CONTACT IN HOUSTON

Monei Essoueni Akeni

Sr Tech Supp Professional

Monei.EssoueniAkeni@Honeywell.com

Honeywell Process Solutions

2101 CityWest Blvd.
Houston, TX 77042

Honeywell House, Arlington Business Park
Bracknell, Berkshire, England RG12 1EB UK

Shanghai City Centre, 100 Zunyi
Road Shanghai, China 200051

process.honeywell.com

BRO-23-124-EN | 12/23
© 2023 Honeywell International Inc.

Honeywell