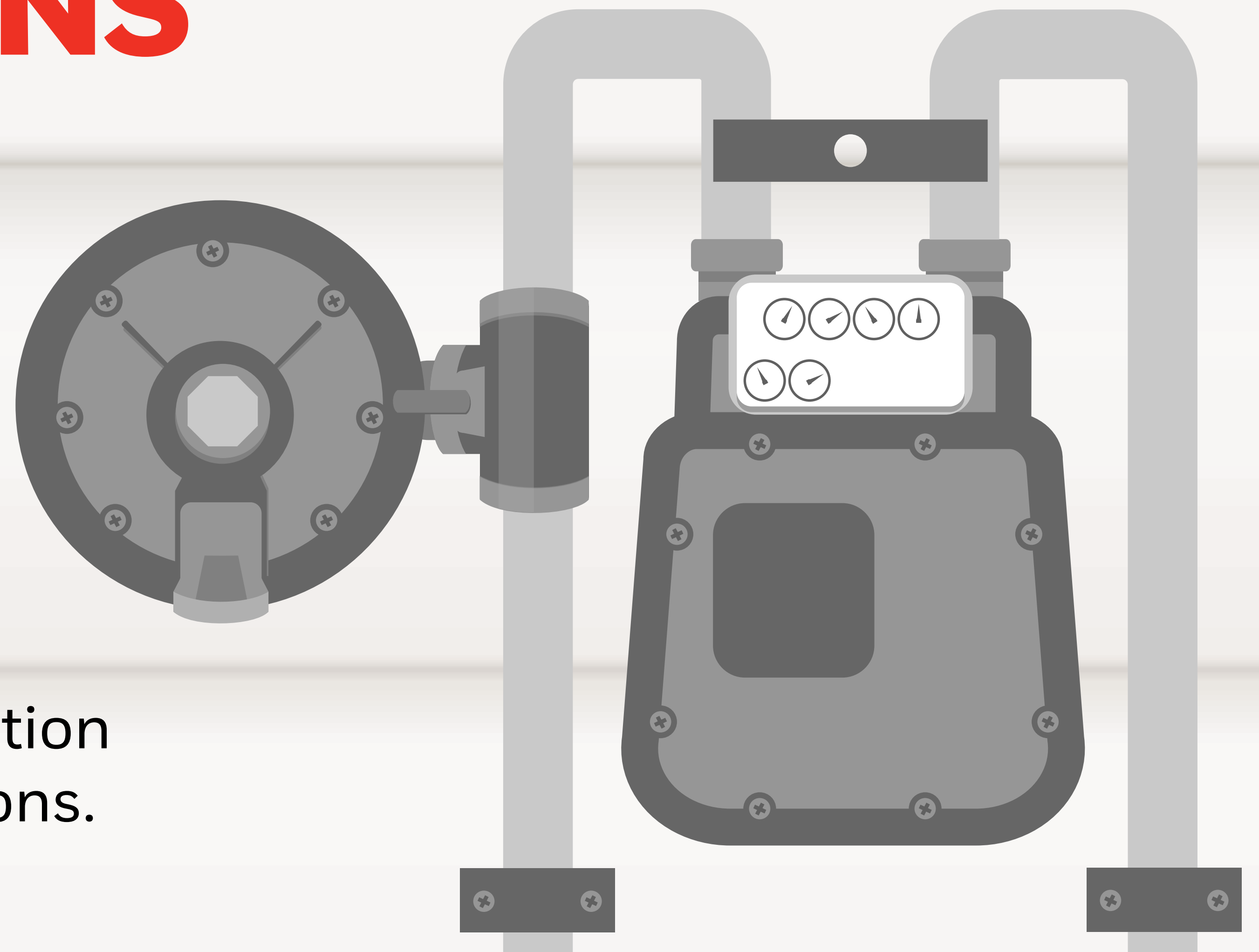


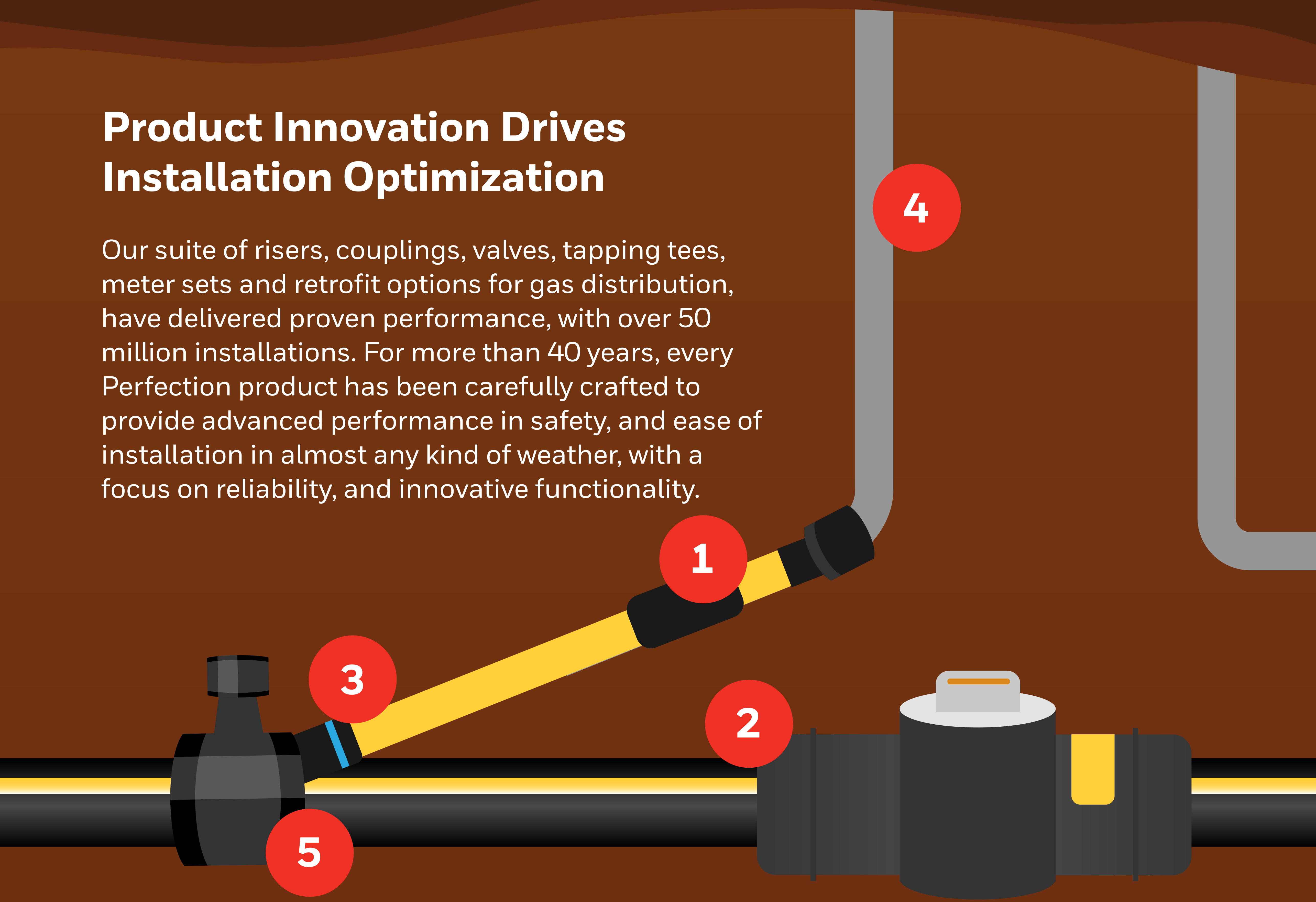
## INNOVATING CONNECTIONS FROM THE MAIN TO THE METER



Honeywell's Perfection Gas Distribution Products use installation and product innovation to help streamline your operations.

### Product Innovation Drives Installation Optimization

Our suite of risers, couplings, valves, tapping tees, meter sets and retrofit options for gas distribution, have delivered proven performance, with over 50 million installations. For more than 40 years, every Perfection product has been carefully crafted to provide advanced performance in safety, and ease of installation in almost any kind of weather, with a focus on reliability, and innovative functionality.

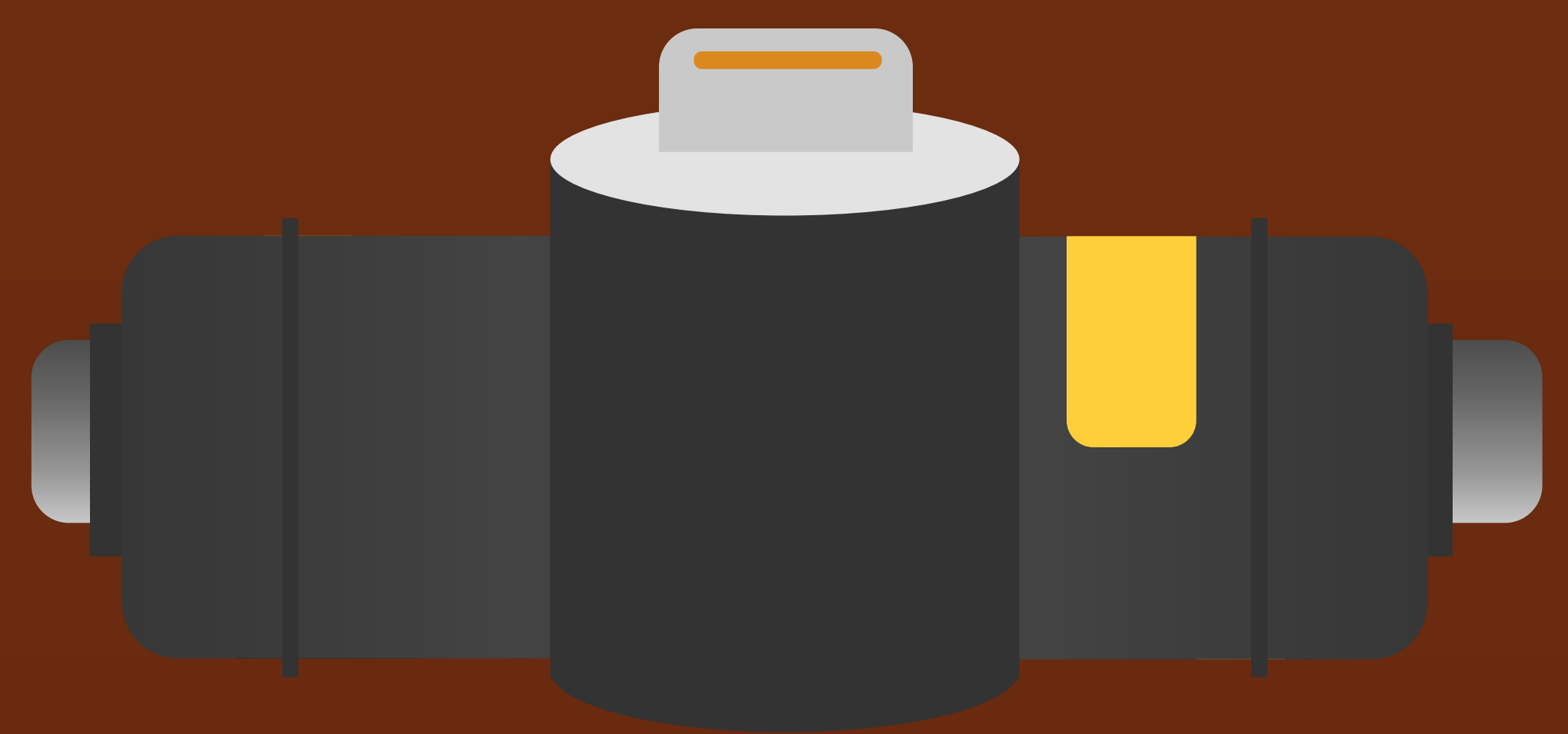


### Our Perfection Portfolio

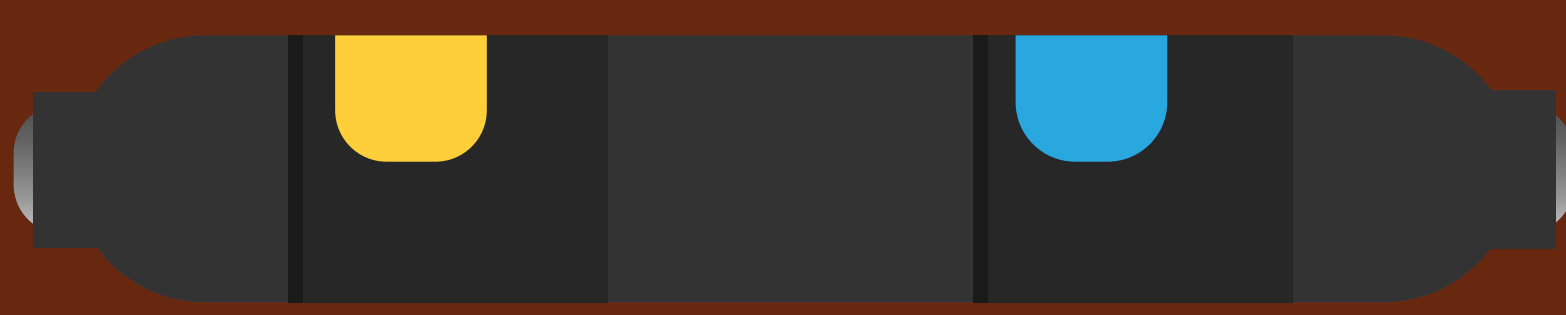
- 1** **Permasert™ Coupling**  
Inner and Outer Seals Provide Double the Protection



- 2** **PE Shut Off Valve**  
Large Port Design for Maximum Gas Flow



- 3** **Perfection™ Excess Flow Valves**  
Automatic Tripping and Reset Can Increase Safety



- 4** **Anodeless Service Risers and Transition Fittings**  
Permanent Meter Reset Without Cathodic Protection



- 5** **PermaLock Mechanical Tapping Tee**  
Make Fast Connections Without Interruption



For a complete main to meter gas distribution solution that can save you time and money, Perfection Gas Distribution Products by Honeywell may be the perfect option for your operations.