

CONNEXO MULTISENSE

Simplifying the utility journey

Honeywell

SIMPLIFYING THE UTILITY JOURNEY



COMMERCIAL/INDUSTRIAL



SMART GRID



RESIDENTIAL/CITIES



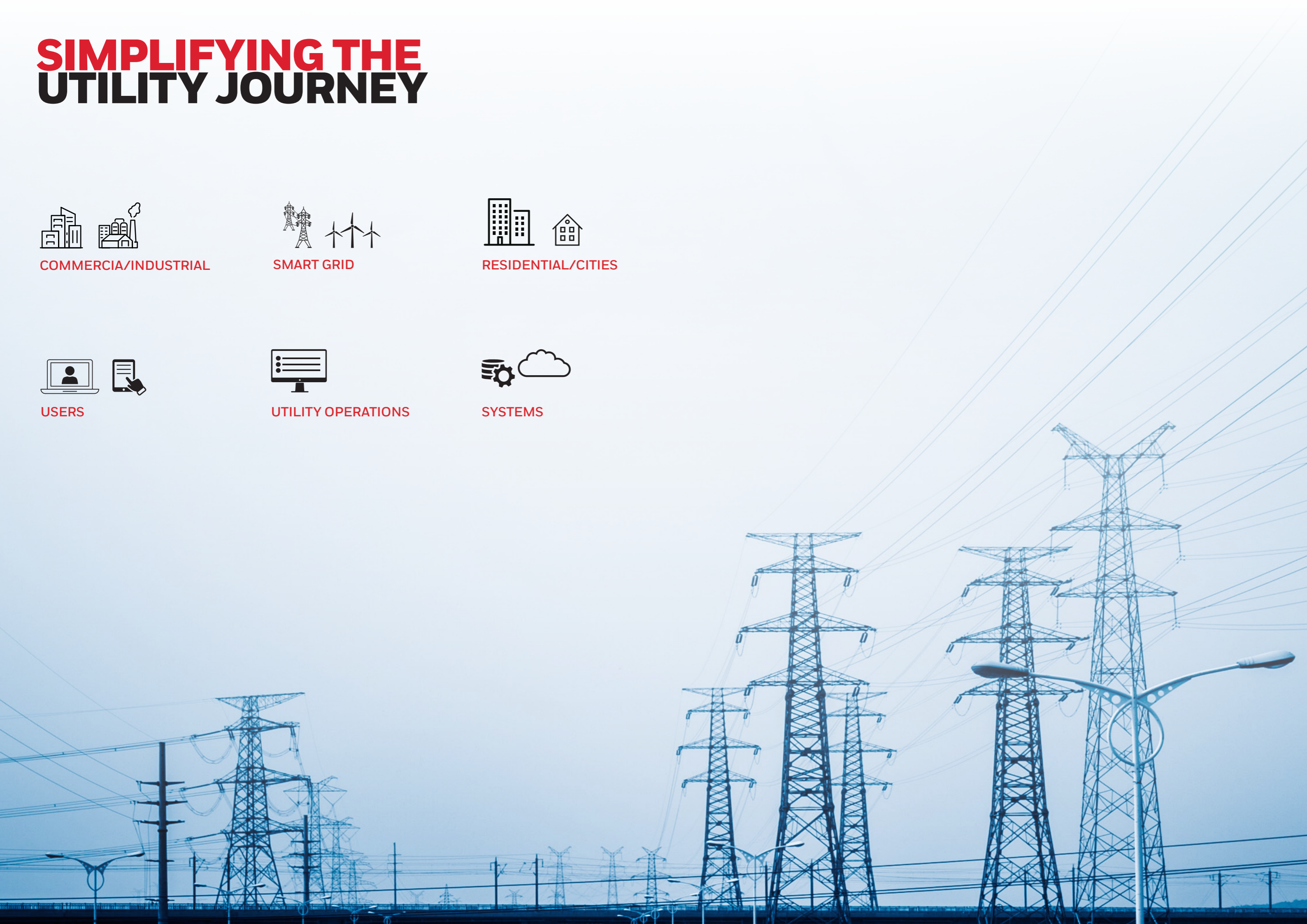
USERS



UTILITY OPERATIONS



SYSTEMS



360° CONNECTION

Connects grid sensors with utility systems, sensor data with enterprise information, operations with processes, users with insight and future needs with agile answers.

UNIFIED UTILITY INTELLIGENCE

ELSTER APPLICATIONS

CONNEXO
MultiSense



Multi-vendor
data collection

CONNEXO
NetSense



RF Mesh
data collection

CONNEXO
Insight



Data
management

PARTNER APPLICATIONS



Prepayment



Utility
analytics



Other

CONNEXO Pulse



MULTI-DEVICE



MULTI-SOURCE



IS YOUR DATA COLLECTION AND MANAGEMENT SOLUTION FUTURE PROOF?

Today's utility sector is experiencing accelerated change and new challenges that are evolving utility business models, changing consumer expectations and causing regulatory models to adapt. Cost-effectively meet today's needs and be prepared for tomorrow's challenges with Connexo[®], an open and scalable data solution designed for utilities. The solution manages the entire smart data flow: from smart device asset management and multi-vendor data collection to modular and scalable data management and comprehensive built-in analytics, unified in a single application.



DATA MULT-VENDOR DATA COLLECTION

Collect any smart data from any vendor across different network technologies with Connexo MultiSense and NetSense.



INSIGHT SCALABLE DATA MANAGEMENT

Acquire, process, store and exchange data in no time with other systems thanks to Connexo Insight.



OPERATIONAL INTELLIGENCE SMART ANALYTICS

Effectively use correlated data and built-in processes to improve your operations and customer service.

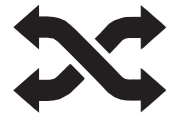


DECISIONS VALUE ADDED APPS

Guided decisions built-in, connected decisions with pluggable apps.



SIMPLIFYING THE UTILITY JOURNEY



FLEXIBLE DEPLOYMENT



SMARTER OPERATIONS



AGILE EVOLUTION



ENSURE DEPLOYMENT AND OPERATIONAL COSTS ARE KEPT TO A MINIMUM

Whether you need to adapt to continuous market and business evolutions or operate with limited resources and capacity, Connexo is a straightforward and easy-to-integrate unified utility intelligence solution that reduces deployment and operational costs and enables an enhanced customer service offering.

THIS WILL BE ACHIEVED BY:

FLEXIBLE DEPLOYMENT

- Easily tune pre-built processes to your needs.
- Grow Connexo with your business needs.
- Easily integrate the solution into existing processes thanks to its open and standard-based platform.
- Remain compliant with standards: Connexo thinks CIM and talks CIM and MultiSpeak.
- Train your operators in only a couple of days as Connexo is designed with them in mind.
- Deploy one single system instead of multiple systems.

SMARTER OPERATIONS

- Stay on top of what is happening and be informed immediately on critical issues.
- Don't lose time and let Connexo guide you in analysing issues and support you in making decisions.
- Manage the entire smart data flow.
- Seamlessly switch between different applications.
- Scale cost-effectively from small to large roll-outs.

AGILE EVOLUTION

- Adapt easily and quickly to technology or business changes.
- Invest incrementally from basic to full blown functionality.
- Deploy new or upgrade apps as you go.
- Manage the lifecycle and evolution of your system, assets and data.
- Incrementally add value to devices.



**WOULD YOU LIKE TO KNOW MORE
ABOUT CONNEXO ELSTER'S NEXT GENERATION
UNIFIED UTILITY INTELLIGENCE SOLUTION?**

**CONTACT US FOR MORE INFORMATION
OR TO REQUEST A DEMO.**

For more information

<https://pmt.honeywell.com/us/en/businesses/smart-energy>

Honeywell Smart Energy

208 S Rogers Lane
Raleigh, NC 27610

HPS-BRO-Connexo-Solutions-A4-ENG-20230712 | 1.0 | 07/23
© 2023 Honeywell International Inc.

THE
FUTURE
IS
WHAT
WE
MAKE IT

Honeywell